

BPR Swiss Laboratory Line:

# Welcome to the Future



## BPR SWISS' LABORATORY TURBINES.

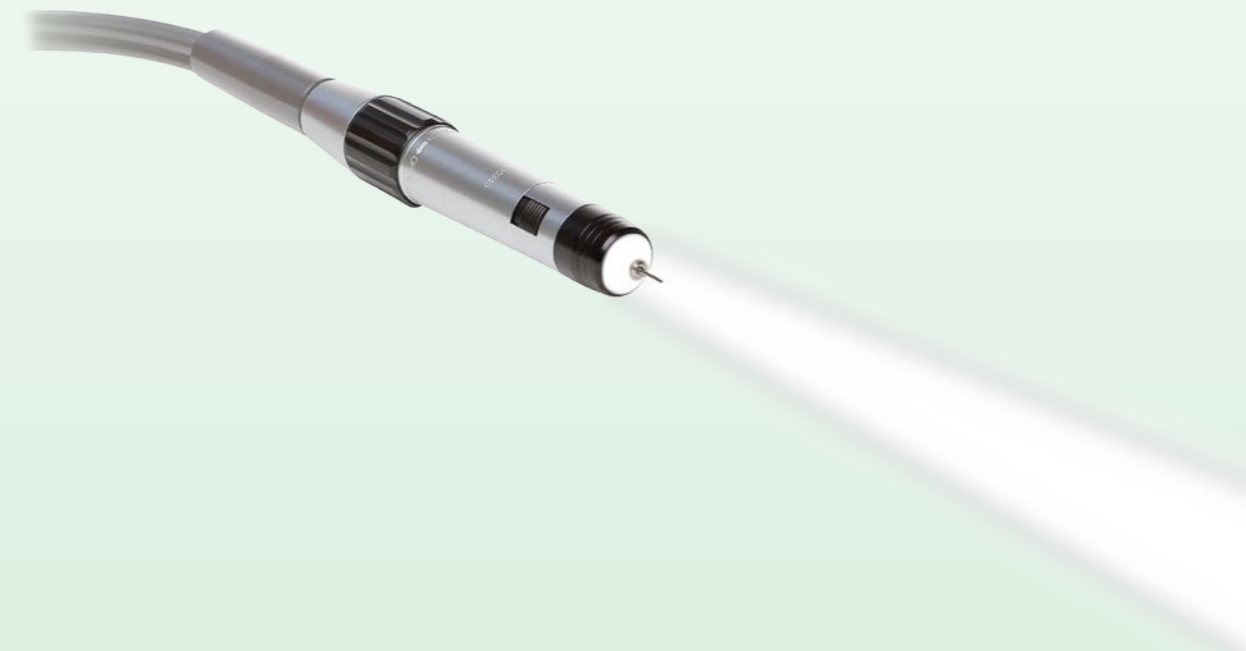
ENJOY THE DIFFERENCE.

BPR laboratory turbines are ideal for precision work on hard materials like zirconium, titanium or ceramics. Developed and made in Switzerland, BPR laboratory turbines stand out due to superior technology and refined workmanship. Enjoy the difference.

## BPR Swiss' Shadow-Free LED Light Turbine. Enjoy the Difference.

BPR is setting new global standards with the LED light turbine LED Carver. Due to novel technology, patent pending, the light turbine features a previously unbeaten shadow-free and homogenous light field.

Enjoy the difference.



### General technical data of all laboratory turbines:

- » Speed: 300'000 rpm
- » Operating pressure: 2.8 – 3.2 bar
- » Air consumption: 40 l/min
- » Water container: 350 ml
- » Chuck diameter: 1,6 mm Ø
- » Rotor: ceramic ball-bearing

### Guarantee:

- » Laboratory turbine: 12 months
- » Rotors: 6 months

### Technical data of the LED light turbine:

- » Max. light intensity: 45'000 Lux
- » Infinitely variable brightness
- » Colour temperature: 5'000 Kelvin (daylight quality)

## LED Carver – The Laboratory Turbine of the Future

The compact, stainless steel LED Carver is equipped with a high-power LED light. Thanks to a novel use of LED technology, the LED Carver has an intense light quality and a unique shadow-free light field. Enjoy the difference.

The LED lighting can be switched on and off via a switch on the station. The switch has three levels. The user can choose to switch on the light constantly or only when the turbine is activated. The light can be adjusted to the required intensity by means of a variable brightness function. The maximum light intensity lies at 45'000 Lux!

Ground material is removed conveniently with the blow out function of the LED Carver.

The incomparably high torque allows surfaces to be manipulated at a very high grinding pressure.

A unique functionality allows the spray to be switched on and off via a switch on the handpiece.



## Hydro-Air Carver – The Classic

The elegant Hydro-Air Carver is a stainless steel, compact laboratory turbine. The Hydro-Air Carver's precision remains unsurpassed to this day. Enjoy the difference.

The Hydro-Air Carver has a spray function that can be switched on and off. It can be used to spray a combination of air and water onto the surface that is being treated to cool it. Cooling a surface while working on it has a positive effect on the lifespan of many materials. The spray can be switched on and off at will via a unique switch on the handpiece.

Ground material is removed conveniently with the blow out function of the LED Carver.

The incomparably high torque allows surfaces to be manipulated at a very high grinding pressure.

The spray can be fine-tuned using the two controllers on the station



## Air-Carver - The Laboratory Turbine with Tradition

The Air-Carver is a compact, handy laboratory turbine made of stainless steel. The Air-Carver offers pure quality. Enjoy the difference.



## Milling Machine Turbijet – A New Definition of Precision

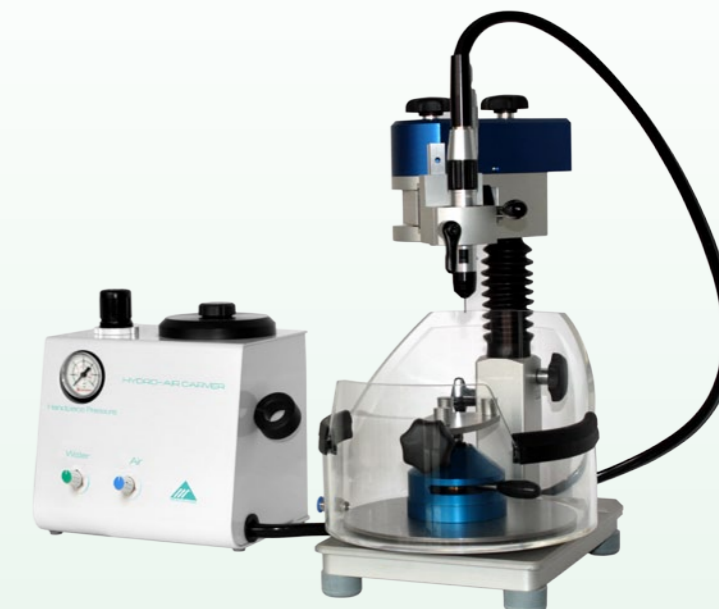
Turbijet, our milling machine is the perfect partner for our laboratory turbines LED Carver, Hydro-Air Carver and Air-Carver. The laboratory turbines are slotted into the drill with an adapter. Enjoy the difference.

### Milling Operating Table:

- » The waste water protection is attached to the milling table magnetically
- » The model table can be moved in any direction

### 3D Milling Arm:

- » Depth stop with micrometer screw
- » 18mm drill stroke
- » Hinged bracket can be fixed mechanically
- » Height can be adjusted swiftly due to locking screw



## The SUN-LED Classic in Detail

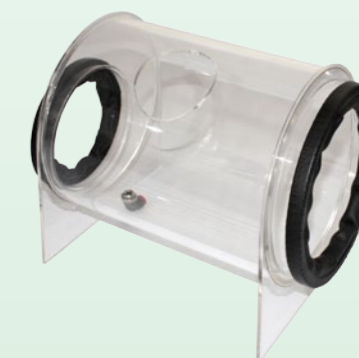
The SUN-LED Classic combines design and LED light technology to perfection. Enjoy the difference.

### Features:

- » Homogenous light field with unique light quality
- » Finest stainless steel housing with a smooth surface minus any grooves: suitable for the strictest hygienic standards and easy to clean
- » Lamp can be switched on and off without touching it by means of a sensor
- » Due to the unique cooling system (no fan or ventilation slots), a lifespan of 50'000 can be guaranteed

### Technical Data:

- » 45'000 LUX at 50 cm distance (35'000 LUX at 70 cm distance)
- » Size of light field 18 cm



## Waste Water Tank:

Our milling box combines highest security with a maximum of comfort. The user is well protected from grinding dust and the workplace stays clean and dry. Efficient and relaxed work is made possible by the particularly well-protected access slot. A further pro is the ergonomic design, which allows an ideal posture and thus highest concentration for fatigue-proof work.

### Technical Data:

- » Length: 320 mm
- » Diameter: 210 mm
- » Weight: 1,5 kg

## BPR SWISS MILLING MACHINES. ENJOY THE DIFFERENCE.

### Turbimilljet Milling Machine - A New Definition of Comfort

The Turbimilljet is a milling machine, micro-motor and laboratory turbine, thus providing a unique all-in-one solution for your laboratory.  
Enjoy the difference.

#### Milling Operating Table:

- » The model table is attached to the milling table magnetically
- » The model table can be moved in any direction
- » Optimal height due to wooden pedestal

#### 3D Milling Arm:

- » Depth stop with micrometer screw
- » 18mm drill stroke
- » Hinged bracket can be fixed mechanically
- » Height can be adjusted swiftly due to locking screw



### Milljet Milling Machine - A New Definition of Efficiency

With its combination of milling machine and micro-motor the Milljet allows milling of the highest professionalism and efficiency.  
Enjoy the difference.

#### Milling Operating Table:

- » The model table is attached to the milling table magnetically
- » The model table can be moved in any direction
- » Optimal height due to wooden pedestal

#### 3D Milling Arm:

- » Depth stop with micrometer screw
- » 18mm drill stroke
- » Hinged bracket can be fixed mechanically
- » Height can be adjusted swiftly due to locking screw



## MICRO MOTORS FOR HIGH-QUALITY PROFESSIONALISM

BPR Swiss' Motor-Jet micro motors are defined by highest quality and precision. They provide all useful features in workmanship of impressive quality.  
Enjoy the difference.

#### The most important features of BPR's Motor-Jets:

- » Overload protection via micro processor control and an additional voltage-limiting function
- » Instantly ready for use again after overload (no intermittent duty)
- » Adjustable speed from 30'000 rpm – 50'000 rpm
- » Anticlockwise rotations of up to 30'000 rpm

#### Micro Motor Foot Control:

- » BPR's Motor-Jet F does not need to be mounted and can be used as an undertable system instantly
- » Infinitely variable speed display via the position of the foot pedal



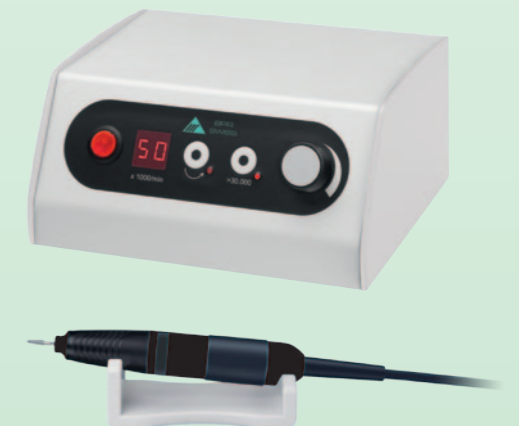
#### Micro Motor Knee Control:

- » BPR's Motor-Jet K can be mounted to a table quickly and simply and is instantly ready for use
- » Digital speed display
- » Fixed speed is set via a knob



#### Micro Motor Table Control:

- » BPR's Motor-Jet T does not need to be mounted and can be used as a table system instantly
- » Digital speed display
- » Fixed speed is set via a knob





BPR Swiss GmbH  
DENTAL MOBILITY  
Dorfstrasse 10  
CH-3673 Linden  
SWITZERLAND

Internet: [www.bpr-swiss.com](http://www.bpr-swiss.com)  
Telephone: +41 (31) 506 06 06  
Telefax: +41 (31) 506 06 00  
e-mail: [info@bpr-swiss.com](mailto:info@bpr-swiss.com)

“**BPR Swiss**  
**keeps**  
**you**  
**smiling,,**”



**ISO 13485**  
Version 02/2012

